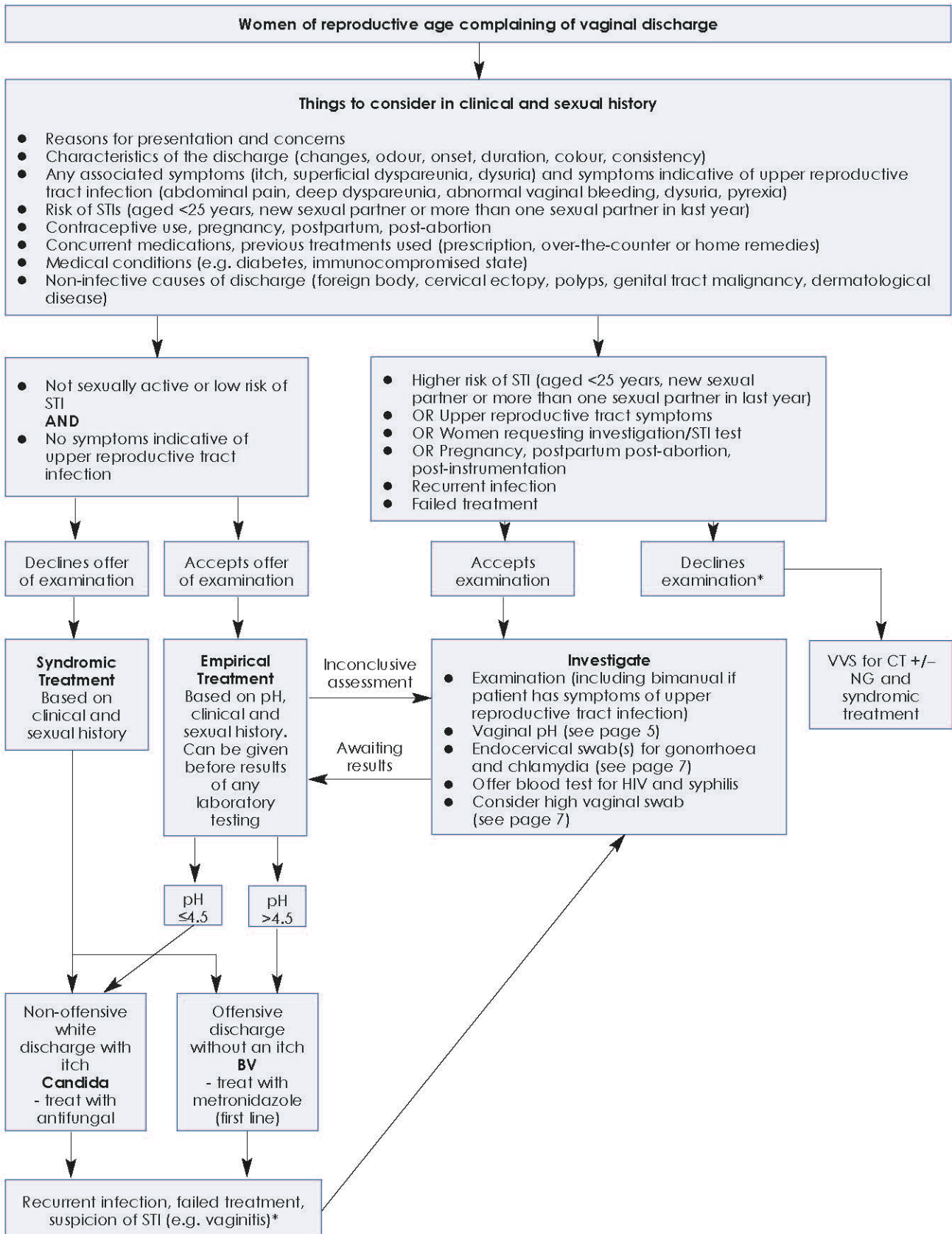


Figure 1 Algorithm for Management of Vaginal Discharge in Non-Genitourinary Medicine Settings



*NB. Examination should be encouraged to exclude sexually transmitted infection, malignancy or foreign body.
 Abbreviations: BV, bacterial vaginosis; CT, *Chlamydia trachomatis*; NG, *Neisseria gonorrhoeae*; STI, sexually transmitted infection; VVS, vulvovaginal swab.